

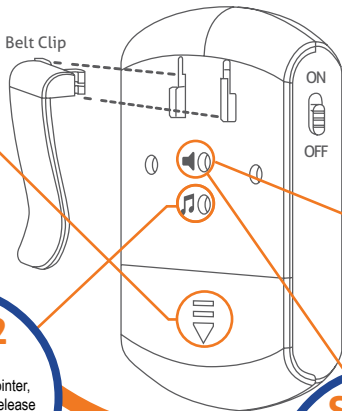
Wearable Pager Alert

STEP 1

Turn on

Snap off the Belt Clip by firmly pushing it downwards. Then slide off the battery cover. Insert 2 x AAA batteries. Turn on.

Belt Clip



STEP 2

Select Tune

Using the enclosed pointer, repeatedly press and release the inset TUNE Select button to select one of the 35 tunes.

STEP 3

Select Volume

Repeatedly press and release the VOLUME Adjust inset button to select the desired volume level (5 levels including silent).

STEP 6

More Pairing

To Pair additional Bells or Sensors, start at STEP 2. Bells or Sensors can be associated with their own tune and volume to differentiate its location, if desired.

STEP 5

Pairing


Immediately trigger the Bell/Sensor you are pairing. If you hear the selected tune, pairing is successful. If you hear the "chirp" sound again, pairing failed. Repeat steps 4 & 5.

STEP 4

Pairing Mode

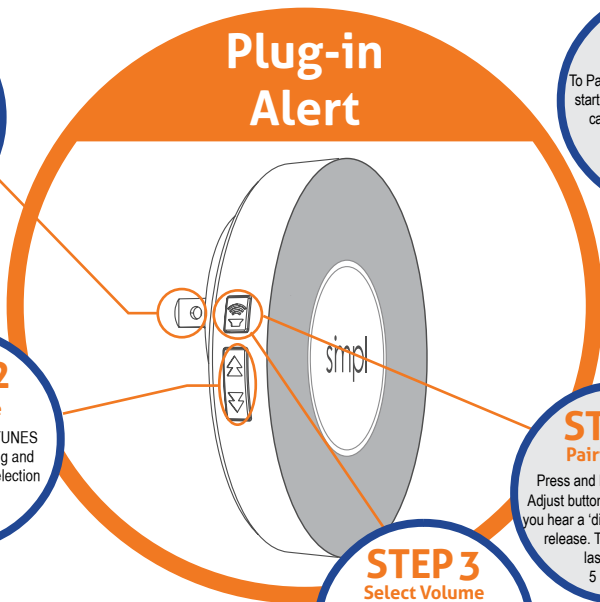
Press and hold the VOLUME Adjust button for 5 seconds until you hear a 'chirp' sound, and then release. The Pairing mode lasts for only 5 seconds.

STEP 1
Plug In



STEP 2
Select Tune

Select one of the 35 TUNES by repeatedly pressing and releasing the TUNE selection button forward or backward.



STEP 3
Select Volume

Now repeatedly press the VOLUME Adjust button until the desired volume is selected (5 levels including silent).

STEP 4
Pairing Mode

Press and hold the VOLUME Adjust button for 5 seconds until you hear a 'ding' sound, and then release. The Pairing mode lasts for only 5 seconds.

STEP 6
More Pairing

To Pair additional Bells or Sensors, start at STEP 2. Bells or Sensors can be associated with their own tune and volume to differentiate its location, if desired.

STEP 5
Pairing

Immediately trigger the Bell/Sensor you are pairing. If you hear the selected tune, pairing is successful. If you hear the "ding" sound again, pairing failed. Repeat STEPS 4 & 5. Start at Step 2 to pair additional Bells/Sensors.