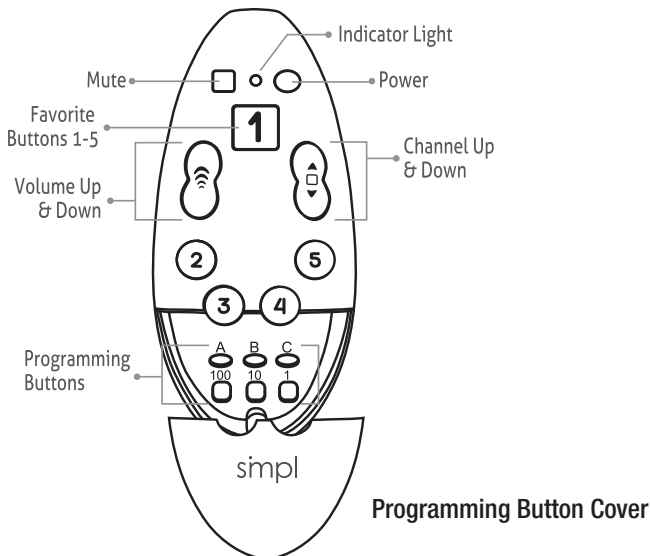


Main Functions

One Click is a universal TV remote with 5 main user functions; Power, channel change, volume, mute and 5 favorite channel buttons.



Set-up

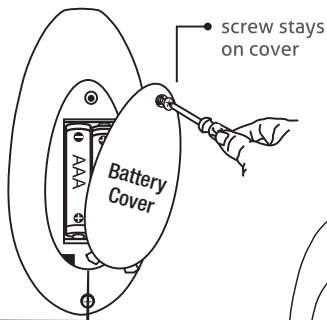
Before Programming

Before you start, ensure there is a clear line of sight to both your TV and cable box (Inclusive of satellite receivers and digital converters). To help ensure a hassle-free setup, please read the steps carefully. In most situations you should be up and running in 5 to 10 minutes.

1. Install batteries

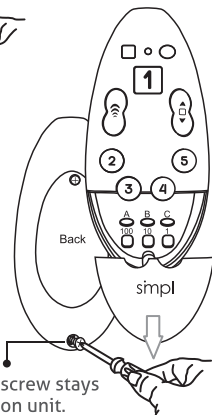
Using the enclosed mini Phillips screwdriver, loosen the screw at the top of the battery cover plate until the cover detaches. The screw will remain on the battery cover.

Insert two new AAA batteries, replace the cover and tighten the screw without over-tightening.



2. Remove the Programming Buttons Cover

Using the enclosed mini Phillips screwdriver, loosen the screw at the bottom of the underside of the remote until the cover slides down and off. The screw will remain on the unit.

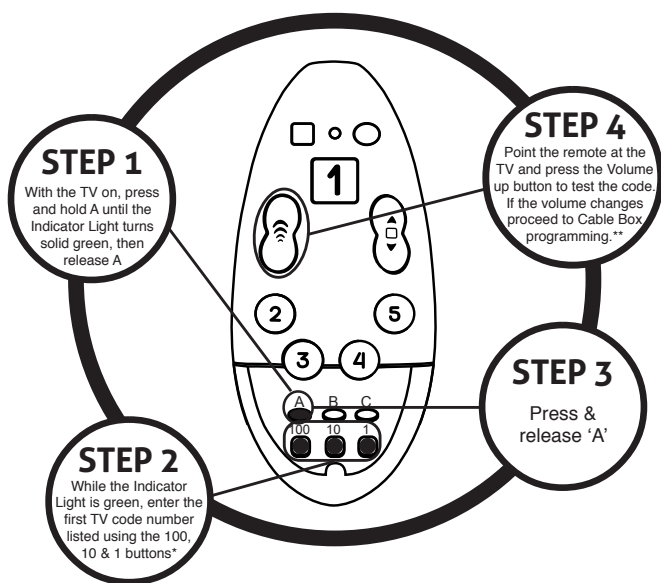


3. Programming must be done for both your TV and cable box separately. Locate and underline the Device Codes for your TV and for your cable box, listed at the end of this guide. There may be one or many codes listed for any particular TV or cable box. For cable boxes, first search by cable provider name. If you do not locate your cable provider name on our list, search instead by the cable box's manufacturer name, which is usually marked somewhere on the cable box. If you do not use a cable box disregard Programming For Cable Box section.

NOTE: If your device or devices is/are not listed, skip ahead to the Manual Code Search section. However, if your TV or cable box was manufactured prior to, or around the year 2000, please check our Full Code List on our website, www.smp1tec.com/oneclick before you try the manual code search.

Programming

TV Programming



* Entering codes: For example, to input code 273, follow this procedure.

100 100

Press and release the 100 button two times.

10 10 10 10 10 10 10

Press and release the 100button seven times.

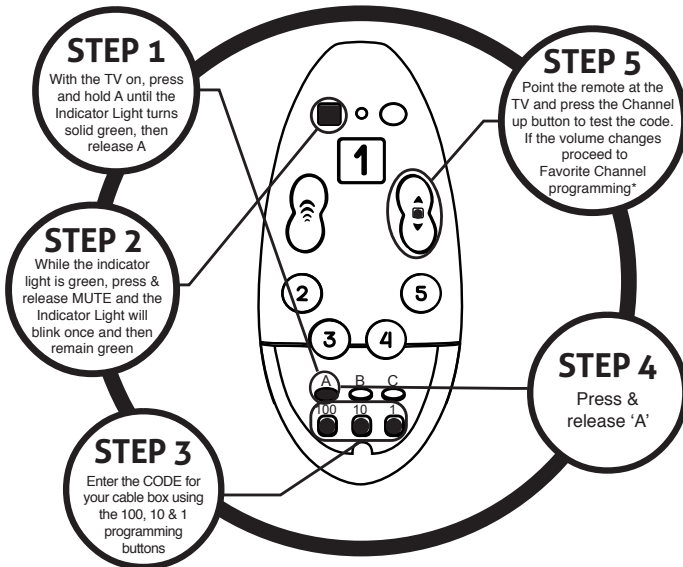
1 1 1

Press and release the 1 button three times.

NOTE: to enter a zero, simply do not press the button for that digit.

** If the Volume does not change, start again at Step 1 entering the next TV code listed (and so on). If none of the codes work proceed to the Manual Code Search / TV section.

Cable Box Programming

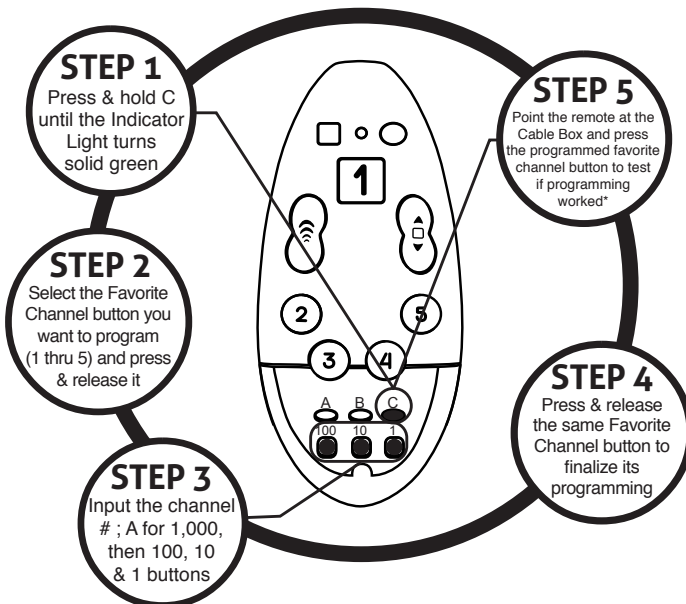


* If the Channel does not change, start again at Step 1 entering the next cable box code listed (and so on). If none of the codes work, proceed to Manual Code Search / Cable Box section.

Favorite Channels

The five large and numbered buttons on the face of the remote are Favorite Channel buttons. You can program the channel number of your most watched stations here for one-touch access.

Favorite Channel programming can be done only after successful TV and Cable Box programming.



Repeat as desired for Favorite Channel buttons 2 through 5. * If not successful, see the Advanced Learning Guide at www.smpltec.com/oneclick for alternate methods.

Additional Favorite Channels (Optional)

Add up to five more Favorite Channels. These channels can only be accessed by pressing the Channel Up/Down buttons. Once you program one or more additional Favorite Channels, the Channel Up/Down button will cycle only through your 6-10 Favorite Channels vs cycling through the full channel list. Therefore, we recommend to add additional favorite channels only if the user will watch only favorite channels.

1. Press and hold the [C] Button until the Indicator Light turns solid green.
2. Press and release the Mute button. Mute button. The indicator light will flash and remain green.
3. Press the Favorite button you wish to program, pressing button # 1 for Favorite #6, button # 2 for Favorite #7, and so on.
4. Program the channel number as described in Step 3-5 of the previous section (Programming / Favorite Channels).

Repeat this procedure for each remaining Favorite Channel button.

If your TV or Cable box requires dashes ("-") or periods (".") for channel selection, please go to section **ADVANCED SETUP**.

Remember to re-attach the programming button cover to the remote when you are finished setting up, and enjoy your new SiMPL One Click remote!

Manual Code Search

Manual code search is the next step if the code(s) listed do not work with your TV or Cable box. Ensure your TV and Cable box are on.

TV

1. Press and hold the [A] Button until the Indicator Light turns solid green.
2. Point the remote at your TV. Press and release the Volume Up button repeatedly, but slowly and carefully, until the TV turns off. When the TV turns off its critical you stop pressing the Volume up button immediately to proceed with programming. You may have to press and release a few times or 200 times or more, until you are successful.
3. As soon as the TV turns off, stop pressing the Volume Up Button and press the [A] button once. The Indicator Light will flash.
4. If the TV never turned off, please visit our website to access the Advanced Learning Guide to complete TV programming at www.smpltec.com/oneclick.

If you do not use a set-top box, skip this remainder of this section.

1. Press and hold the [A] Button until the Indicator Light turns solid green.
2. Press and release the Mute Button. The LED will blink once and turn solid green.
3. Point the remote at your Cable Box. Press and release the Channel Up button repeatedly, but slowly and carefully, until the channel changes. When the channel changes its critical you stop pressing the Channel Up button immediately to proceed with programming. You may have to press and release a few times or 200 times or more, until you are successful.
4. If the channel never changed, please visit our website to access the Advanced Learning Guide to complete Cable Box programming at www.smpltec.com/oneclick.
5. Programming must be done for both your TV and cable box separately. Locate and underline the Device Codes for your TV and for your cable box, listed at the end of this guide for quick reference. There may be one or many codes listed for any particular TV or cable box. For cable boxes, first search by cable provider name. If you do not locate your cable provider name on our list, search instead by the cable box's manufacturer name, which is usually marked somewhere on the cable box. If you do not use a cable box disregard Programming For Cable Box section.

NOTE: If your device or devices is/are not listed, skip ahead to the Manual Code Search section. However, if your TV or cable box was manufactured prior to, or around the year 2000, please check our Full Code List on our website, www.smpltec.com/oneclick before you try the manual code search.

Advanced Learning

The SiMPL One Click remote is capable of learning additional functions from your current remote(s), for example, Sleep Timer, Subtitles, Dashes or Periods (i.e. channels 33-7 or 22.5).

For Advanced programming please visit www.smpltec.com/oneclick and download the Advanced Learning Guide.

Factory Reset

If for any reason you need to reset your SiMPL One Click remote (i.e. if you want to use the SiMPL remote with another TV/Set-Top Box) you can do so by holding the [A] Button & the Power Button for 3 seconds. The Indicator Light will turn orange and blink. This will clear any programmed codes on the device.

Warranty and Comments

The 12 MONTH WARRANTY IS LIMITED TO THE REPAIR OR REPLACEMENT OF DEFECTIVE PARTS ONLY. In no event will SiMPL Technology, its representatives, affiliates, associates and the like be liable for any damages, including without limitation direct or indirect, special, incidental, punitive or consequential damages, losses or expenses arising in connection with any failure of performance of this device.

PROP 65: The SiMPL OneClick remote was successfully tested for excessive chemical or metal content (known to the State of California) and contains acceptable levels according to Prop 65.

Technical Support: Do not return unit to re-seller

Please call 1-833-237-4675 ext. 1. or email support@smplttec.com

For WARRANTY SERVICE, contact us first.

USA: Simpl Technology, or 340 Royal Poinciana Way, Suite 317 Palm Beach, FL 33480

CANADA: 100 Hanlan Rd., Unit #3, Woodbridge, ON L4L 4V8

Device Codes

TV Codes

Acer 374 372

AOC 479 305 218 212

Apex 370 360 359 357 355 356 323

320 228 201 95 15 12

Bell 284

Bang & Olufsen 75

Citizen 224 202 172 163 150 26 24 23

22 18 16 6 5

Coby 559 558 546 540 539 538

Dell 427 426 425 424 265

Denon 169

Digihome 436 384

Element 481 444 334 331 321 318 232
217

Fujitsu 187

Funai 421 418 362 358 333 331 251

208 197 187 132 41

General Electric (GE) 248 241 233 231 211

207 206 195 183 182 172 170 165 147

143 130 125 44 43 23 9 8 3

Harman Kardon 238

Hisense 580 579 350 349 321 217

Hitachi 251 241 231 225 224 185 172

169 142 126 116 55 54 53 52 51 50

49 48 26 23 18 5

Ilo 375 373 367 364 361 348 294 209

119

Infinity/JBL 151 66 10

Insignia 378 371 365 351 350 349 321

286 285 283 249 105

JVC 279 238 235 234 186 60 59 58

57

LG 290 216 215 214 212 208

LG Health Care 344 343 342 341 340

339 338 337 214

LXI 254 251 223 173 172 131 125 117

90 66 3

Magnavox 292 291 281 273 251 241

237 236 231 225 224 200 194 192

187 175 172 167 164 163 154 151

150 132 110 68 67 66 65 64 34 28

27 17 10 8 6

Marantz 238 237

Medion 533 505 361

Memorex 273 251 248 244 223 187

172 149 90 72 32 18

Mistubishi 240 239 194 192 187 172

149 129 123 122 72 71 70 28 23 5 4

NEC 194 193 191 183 172 163 90 28

23 7 6 5

Nexus 299

Olevia 322 319 300

Oncommand 519 429

ONN 567 566 397 217

Panasonic 386 335 242 241 231 211 196
195 183 177 173 165 151 88 78 73 66
11 10 9 8
Philips 390 388 387 384 382 381 368
251 237 236 225 223 220 218 119 164
163 151 146 68 66 63 27 10 5
Pioneer 235 166 131 76 51 48 8 2
Proscan 409 403 402 400 399 398 381
356 334 321 318 317 233 184 172 125
Proview 232
Pyle 442
RCA 317 251 241 233 231 210 183 182
172 149 134 130 127 125 87 86 85 84
82 80 79 78 48 14 8 5 3
Roku TV 404 217
Samsung 423 422 413 412 411 410 408
393 391 352 309 308 307 306 293 288
287 280 247 246 245 244 229 225 224
221 212 202 194 192 172 163 151 112
32 28 26 23 16 6 5
Samtron 497
Sansui 380 379 378 235 219 197 176
Sanyo 245 244 194 109 92 91 90 89 42
Sceptre 548 497 446 406
Sharp 255 225 224 141 129 91 26
Sony 407 406 232 200 189 122 119 109
Sylvania 297 275 274 273 263 251 240
237 229 194 192 172 163 151 150 132
112 110 69 68 66 65 64 28 10 6
TCL 397 389 383 363 361 353 332 217
164
Toshiba 247 240 202 201 180 131 118
96 90 74 47 17 16
Viewsonic 377 329 328 327 326 325 305
261 249 212 199 198 193

Vizio 409 369 347 346 345 332 314 310
290 249 172
Westinghouse 282 258 204 200 192 176
171 170 130 90 41
White Westinghouse 414 405 366 251 213
Xiaomi 430
Zenith 264 251 248 235 223 219 178 40
24 18 1

Cable & Satellite Providers and Box Manufacturers

Access Communications 283
 Alphastar 125
 Altice 102 28 21 13
 Amino 282 277
 Apex 305 124
 Arris 254 252 251 250 249 248 220
 203 202 201 200 197 196 183 134 122
 121 115 109 75 55 49 5 3 1
 AT&T Uverse 280 115
 Bein 161
 Bell 255 26 8 4
 Bellsouth 84
 Bright House 28 13
 Buckeye Cable 11 220 203 202 201
 Cable Más 106 105 48 19 13 12
 Cable One 81 28 13 5
 Cablevision 102 28 13
 Charter/Charter Digital 103 28 18 13
 Cisco 280 272 69 68 67 66 3
 Cogeco 28 21
 Comcast 308 307 29 21 13
 Conifer 142
 Consolidated Communications 210 104
 Coship 286
 Cox 308 307 87 38 17 13
 DirecTV 257 151 133 124 98 97 96 95
 94 93
 Dish Network 303 302 271 119 101 100
 DishPlayer 101 100
 Eastern 15 6
 Eastlink 28
 Echostar 209 208 207 206 205 204 150
 137 119 113
 Express Bellview 4
 Express Vu 119
 Frontier 38
 General Instrument (GI) 254 252 251 250
 249 248 248 220 203 202 201 200 197
 196 183 134 122 121 115 109 75 55
 49 5 3 1

Google Fiber 104
 Houston 113
 Hughes Network 267 132 124 98 97 96 95
 94 93 30
 Magnavox 293 292 126 117 40
 Mediacom 85 28 21 13
 Mediasonic 231 229
 Midcontinent Communications 21
 Motorola 280 254 252 251 250 249 248
 220 203 202 201 200 197 196 183 134
 122 121 115 109 75 55 49 5 3 1
 Novus 28 13
 Optimum 102 28 21 13
 Point Sky 51
 Primestar 121 49
 Prosat 138
 RCN 28
 Rogers 102 28 13
 Rural Cable 196
 Samsung 270 108 65 23 6
 Sat Star 51
 Scientific Atlanta 275 272 69 68 67 66 3
 Shaw 316 315 314 313 312 311 310 309
 103 28 21
 Spectrum 28 13
 STS 216 213
 Suddenlink 28 21 13
 TBayTel 280 254 252 251 250 249 248
 220
 Telus 280 256 159
 Time Warner 28 13
 Tivo 162 152 151 130 83 33 32 30
 Verizon 276 28
 Videotron 13
 Viewsat 278
 Viewstar 185 20
 Voom 309
 Wideopenwest 13
 Xfinity 308 307 29 21 13
 Zentech 297